

Spinweld Caps available

Code	Description	Recommended for Holes	" A "	" B "	" C "
XSWCP015	Spinweld Cap 0-15mm	0-15mm	Ø 28mm	0mm	15mm
XSWCP1525	Spinweld Cap 15-25mm	15-25mm	Ø 34mm	15mm	25mm
XSWCP2535	Spinweld Cap 25-35mm	25-35mm	Ø 48mm	25mm	35mm
XSWCP3545	Spinweld Cap 35-45mm	35-45mm	Ø 54mm	35mm	45mm
XSWCP4555	Spinweld Cap 45-55mm	45-55mm	Ø 64mm	45mm	55mm
XSWCP5565	Spinweld Cap 55-65mm	55-65mm	Ø 74mm	55mm	65mm
XSWCP100	Spinweld Cap 100mm	80-100mm	Ø 120mm	80mm	100mm

Product name: Spinweld Caps

Product code: See Above Table

COPYRIGHT RESERVED

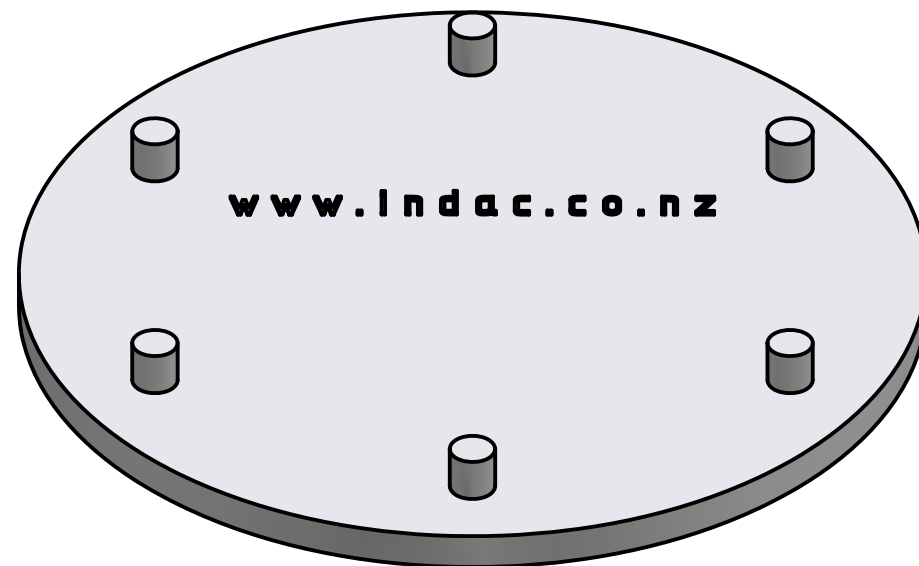
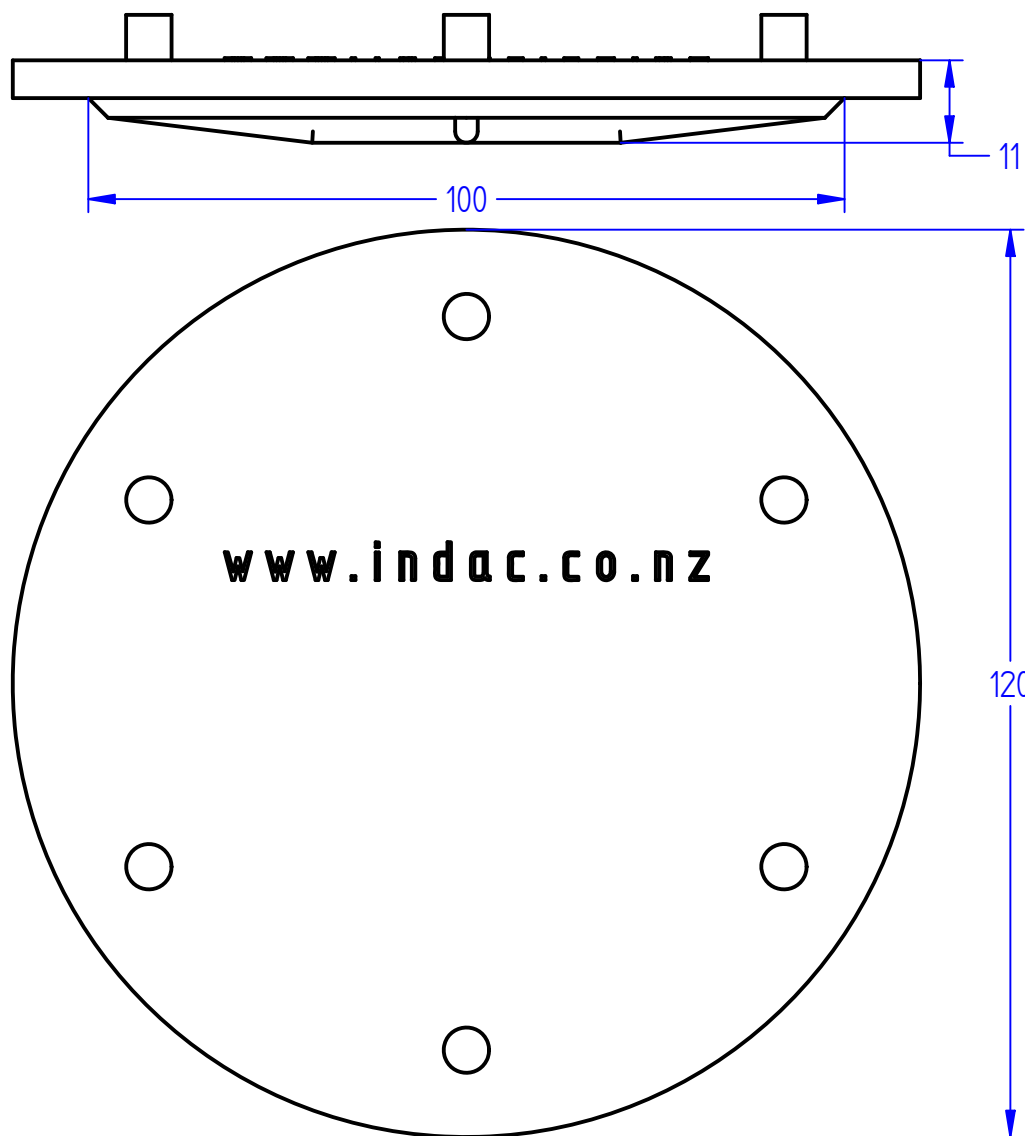
All dimensions and weights are nominal

FILE NAME: Spinweld Caps with table.dft

INDAC
INNOVATIVE DESIGN AND CONSTRUCTION

Box 378
26 Stuart Street
Blenheim, 7201

Phone: +64 3 578 3034
www.indac.co.nz
www.plasticproducts.co.nz



Product name: Spinweld cap 100mm

Product code: XSWCP100

COPYRIGHT RESERVED

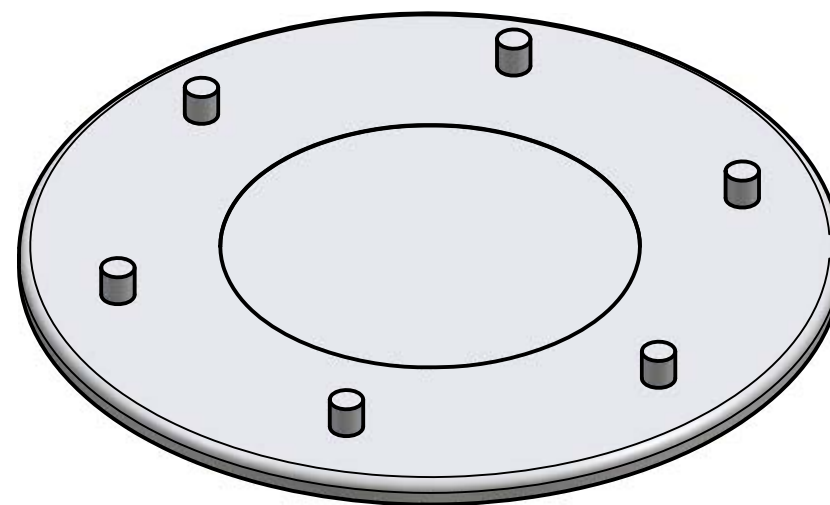
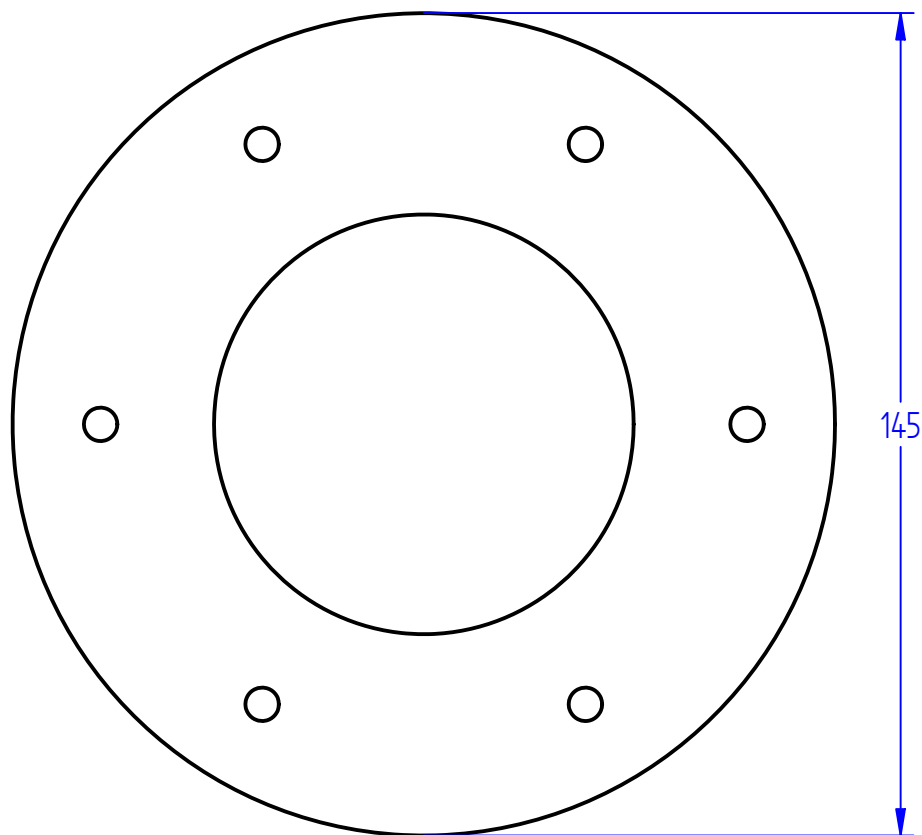
All dimensions and weights are nominal

FILE NAME: Spinweld cap 100mm.dft

INDAC
INNOVATIVE DESIGN AND CONSTRUCTION

Box 378
26 Stuart Street
Blenheim, 7201

Phone: +64 3 578 3034
www.indac.co.nz
www.plasticproducts.co.nz



Product name: Spinweld Cap 127mm

Product code: XSWCP127

COPYRIGHT RESERVED

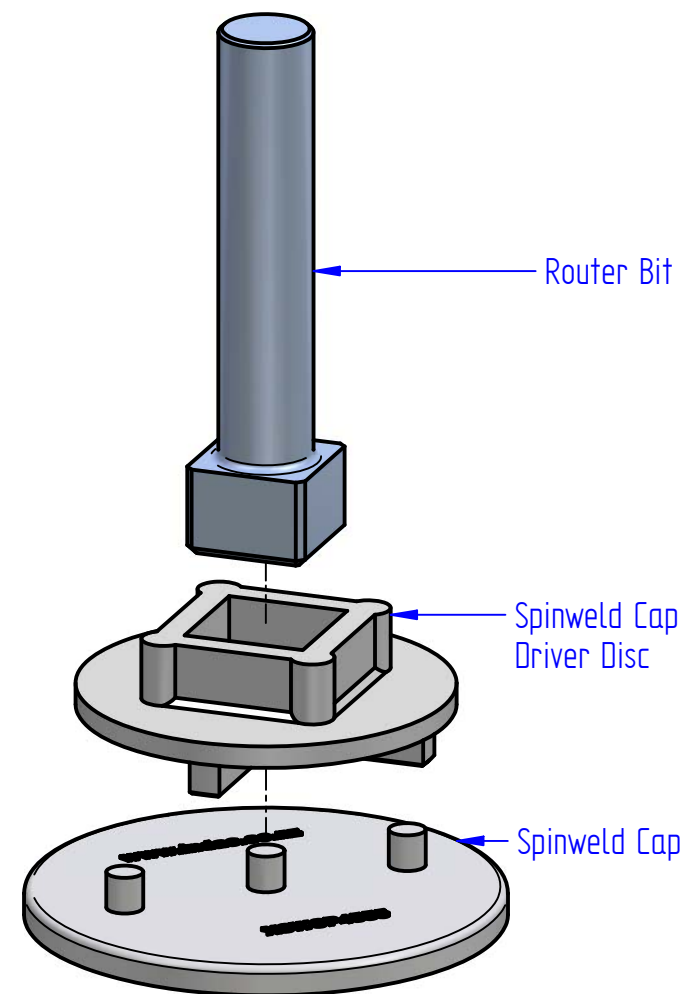
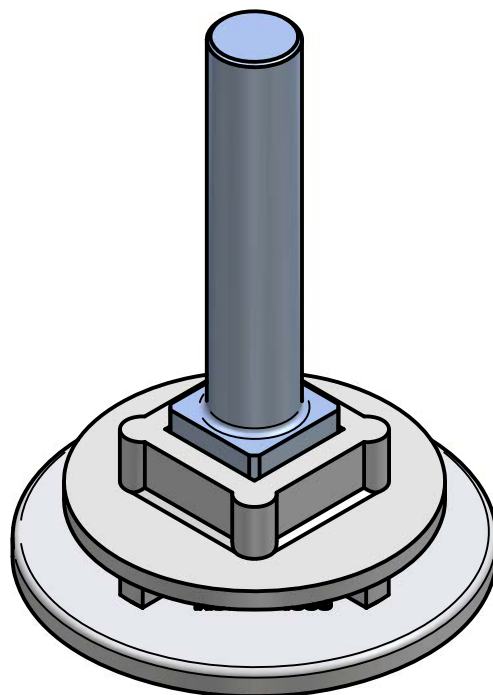
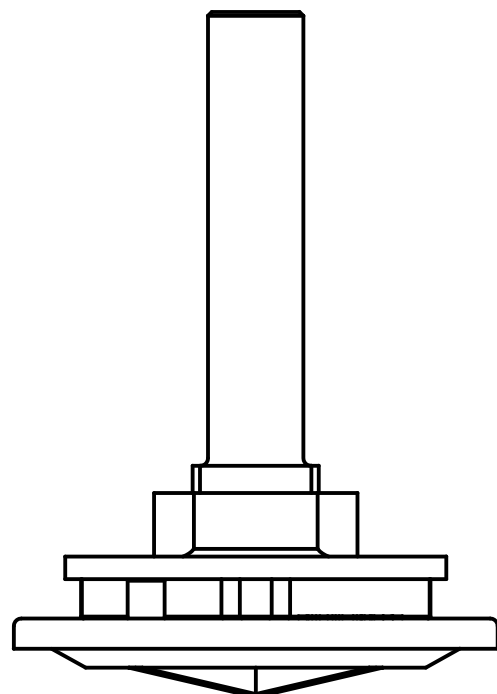
All dimensions and weights are nominal

FILE NAME: Spinweld Cap 127mm.dft

INDAC
INNOVATIVE DESIGN AND CONSTRUCTION

Box 378
26 Stuart Street
Blenheim, 7201

Phone: +64 3 578 3034
www.indac.co.nz
www.plasticproducts.co.nz



Product name: Spinweld Cap Driver Large/Small

Product code: XSWCDL / XSWCDS

COPYRIGHT RESERVED

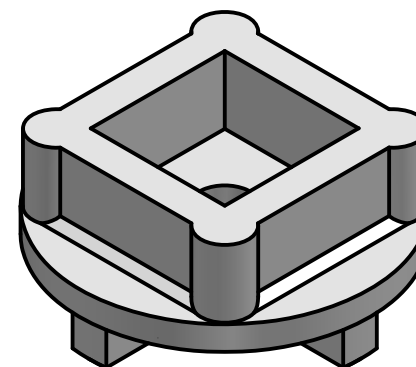
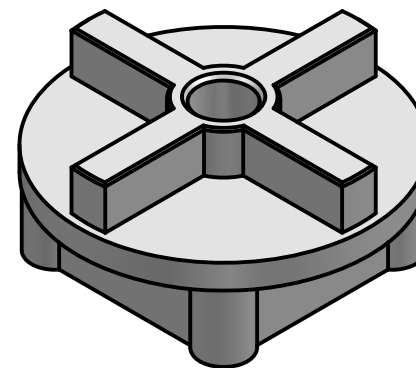
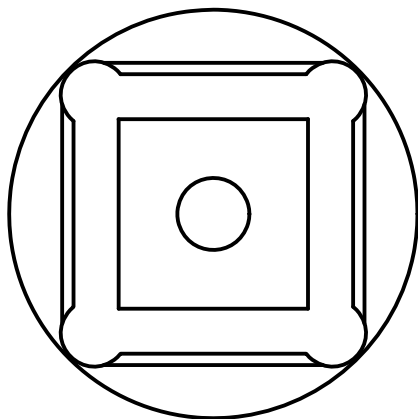
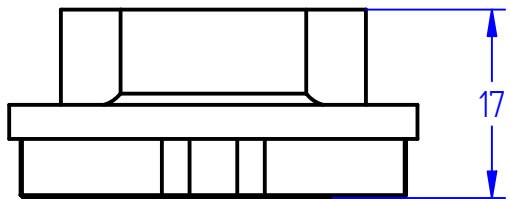
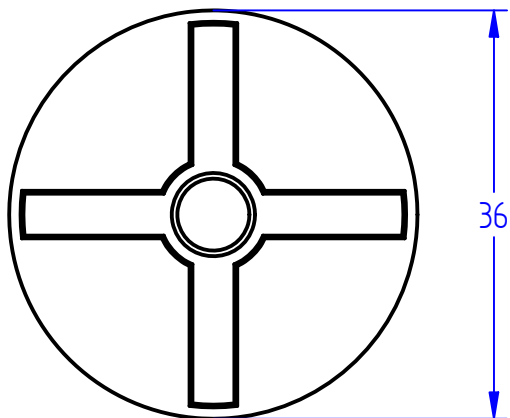
All dimensions and weights are nominal

FILE NAME: Spinweld Cap Driver assembly line drawing.dft

INDAC
INNOVATIVE DESIGN AND CONSTRUCTION

Box 378
26 Stuart Street
Blenheim, 7201

Phone: +64 3 578 3034
www.indac.co.nz
www.plasticproducts.co.nz



Product name: Spinweld Cap Driver Small

Product code: XSWCDS

COPYRIGHT RESERVED

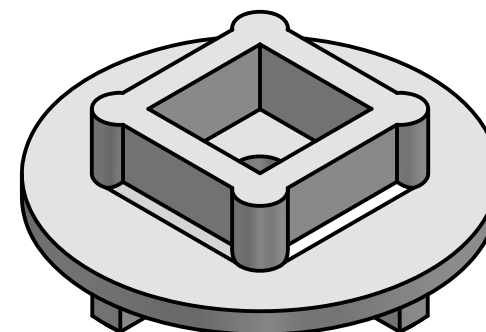
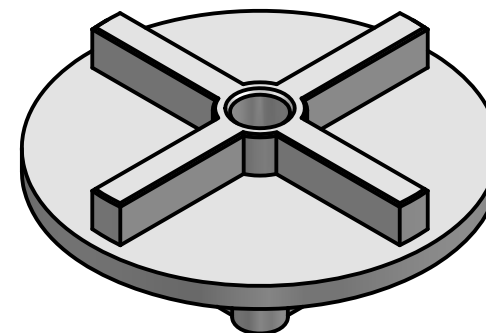
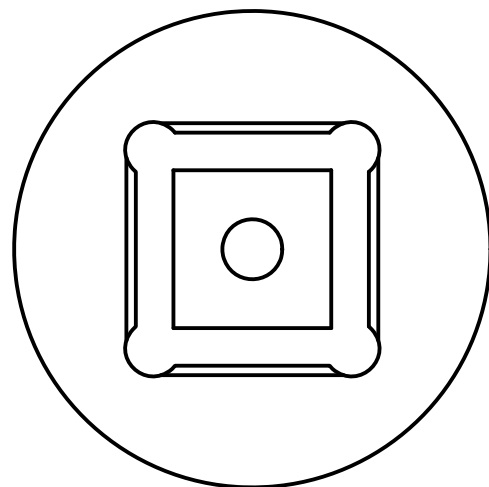
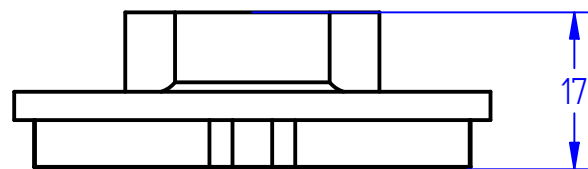
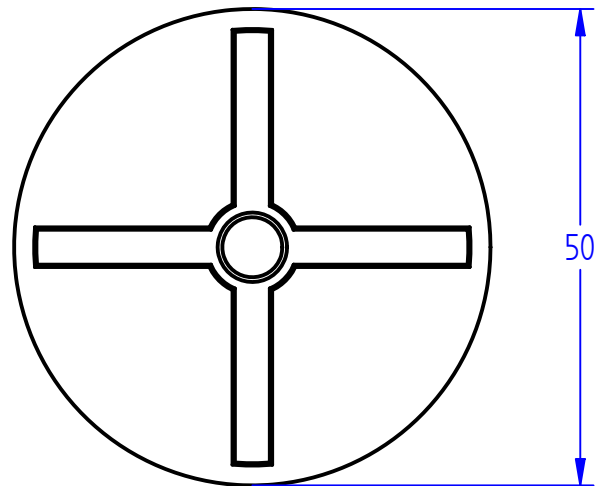
All dimensions and weights are nominal

FILE NAME: Spinweld Cap Driver Small.dft

INDAC
INNOVATIVE DESIGN AND CONSTRUCTION

Box 378
26 Stuart Street
Blenheim, 7201

Phone: +64 3 578 3034
www.indac.co.nz
www.plasticproducts.co.nz



Product name: Spinweld Cap Driver Large

Product code: XSWCDL

COPYRIGHT RESERVED

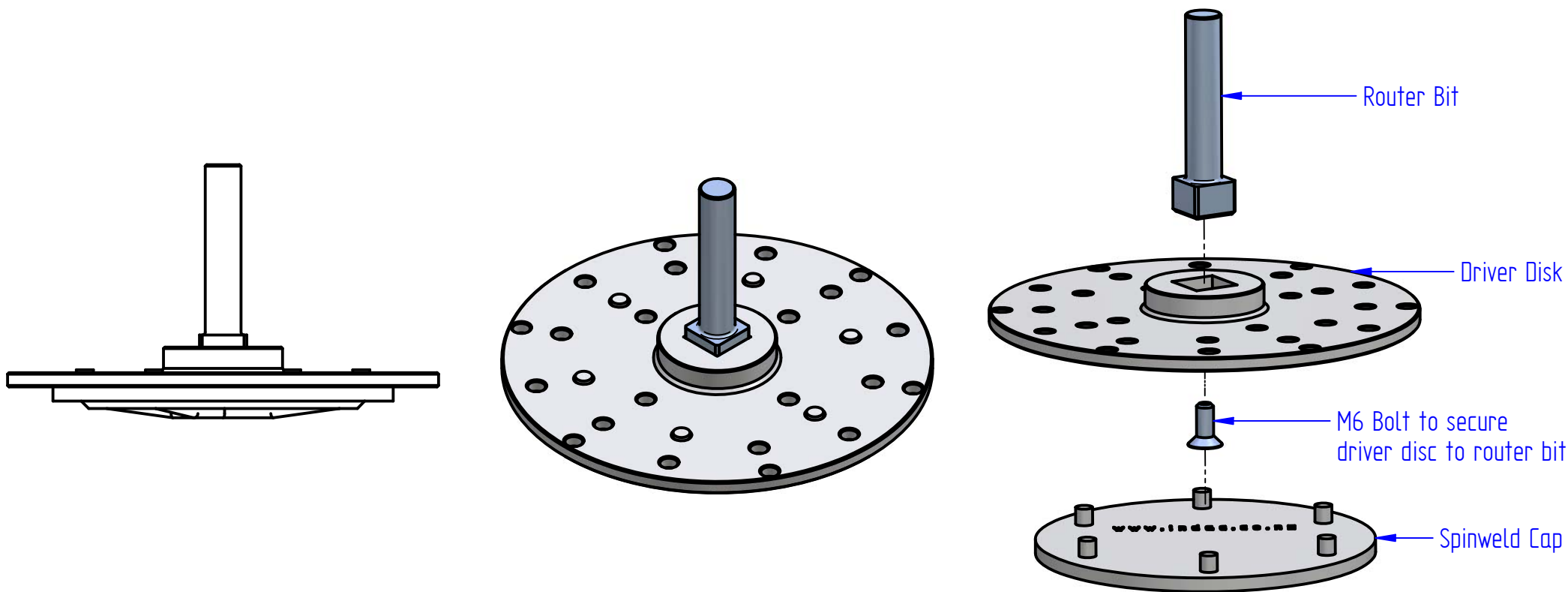
All dimensions and weights are nominal

FILE NAME: Spinweld Cap Driver Large.dft

INDAC
INNOVATIVE DESIGN AND CONSTRUCTION

Box 378
26 Stuart Street
Blenheim, 7201

Phone: +64 3 578 3034
www.indac.co.nz
www.plasticproducts.co.nz



Product name: Driver Disk for large Spinweld Caps

Product code: XSWDD

COPYRIGHT RESERVED

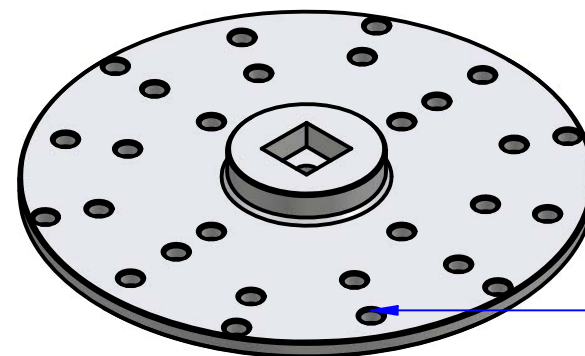
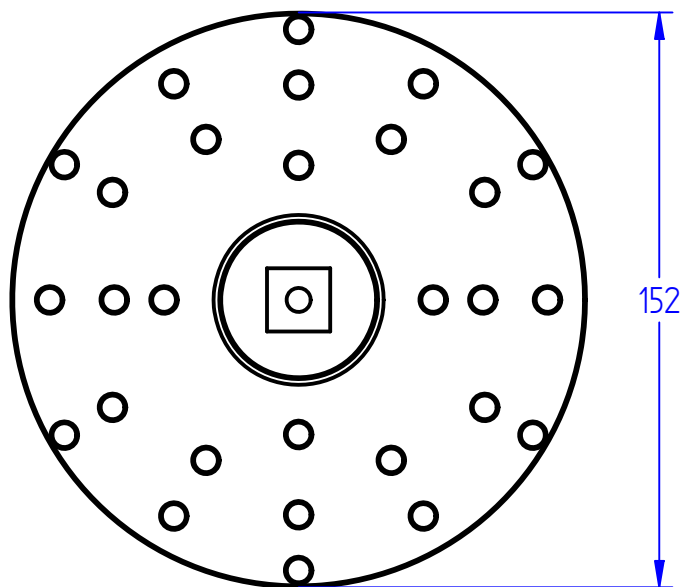
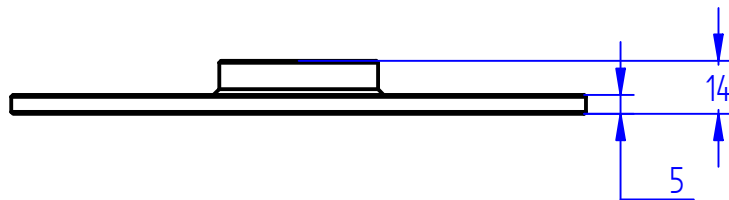
All dimensions and weights are nominal

FILE NAME:Driver disk with Spinweld cap 100mm.dft

INDAC
INNOVATIVE DESIGN AND CONSTRUCTION

Box 378
26 Stuart Street
Blenheim, 7201

Phone: +64 3 578 3034
www.indac.co.nz
www.plasticproducts.co.nz



Hole pattern
matches
Spinweld fittings

Product name: Spinweld Driver Disk

Product code: XSWDD

COPYRIGHT RESERVED

All dimensions and weights are nominal

FILE NAME: Spinweld Driver Disc.dft

INDAC
INNOVATIVE DESIGN AND CONSTRUCTION

Box 378
26 Stuart Street
Blenheim, 7201

Phone: +64 3 578 3034
www.indac.co.nz
www.plasticproducts.co.nz